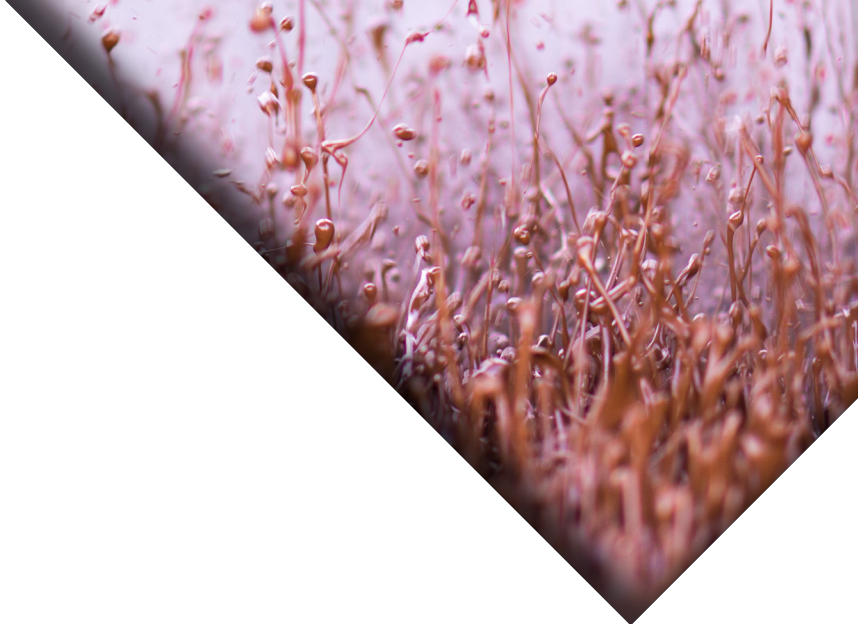




SHAKER SCREENS.



SPECIFICATION.

SERIES
3XF

COMPLIANCE
API RP 13C (ISO 13501)

PRODUCT DESCRIPTION.

TWMA offers replacement screens manufactured to be compliant with the API RP 13C (ISO 13501) guidelines. Compliance means that our shaker screens meet and exceed the American Petroleum Institutes (API) new recommended practice for shaker screen testing and labelling.

New lightweight frame with increased support creates better "G" force transfer to the screen surface and reduces flexing between support members. Improved bonding technique ensures stability of cloth openings to offer consistent particle separation. Multi-layer construction offers better de-blinding characteristics for consistent flow rates. Newly designed perforation pattern eliminates fluid channelling by distributing feed evenly across the screen surface. Increased bonding area reduces the chance of adhesive failure without sacrificing available unblocked screening area. New bonding agent for increased adhesion and heat resistance, resulting in better performance in OBM and SBM systems.

FEATURES & BENEFITS.

- 3XF frame eliminates plat-frame separation
- Manufactured using high yield strength structural steel
- New perforation design provides more stability to screen surface during operation
- Increased support reduced flexing, increases screen life and maximizes the G force at the screen surface
- Lighter frame design
- Resistant to near particle blinding
- Increased volume handling